

## Quick Connection Guide Using the Phone Book

For details on operations, refer to the Operating Instructions.

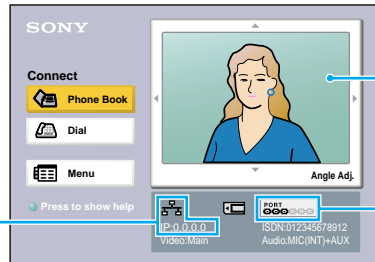
### To begin with

Turn on your Video Communication System and TV monitor, and check the following to ensure that connection is possible.

#### When using the LAN

Is the LAN indicator dark and is the IP address displayed?

**Note:** Connection to a remote party is impossible if neither the IP address nor ISDN indicator is displayed.



Is the picture of your camera (local picture) on the monitor screen?

#### When using the ISDN

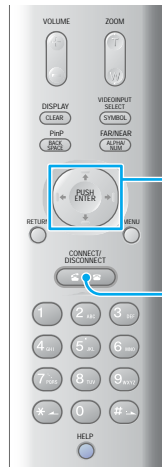
Are one or more ports of the ISDN indicator dark?

### Main indicators that appear during communication

	Controlling a remote camera
	Local microphone is cut off
	Sending a still image
	Receiving a still image
	Sending or receiving an image of a computer
	Sending or receiving data of a whiteboard

### After checking...

### Let's connect

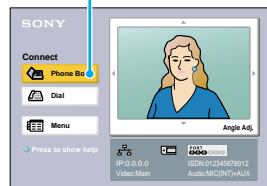


↑/↓/←/→  
(arrow) buttons and PUSH ENTER button

CONNECT/DISCONNECT button

#### 1 Select "Phone Book" and press PUSH ENTER.

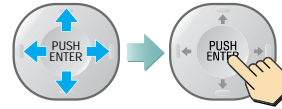
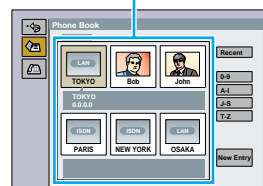
"Phone Book"



Use ↑/↓ to select "Phone Book" if it has not been selected.

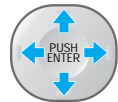
#### 2 Select a remote party, and press PUSH ENTER.

Select a remote party.



Or

Select a remote party.



#### 3 Dial to the remote party.

"Dial"



#### 4 The system dials automatically, and establishes communication.



**If the remote party is not registered in the Phone Book**  
Call a remote party manually, referring to the Operation Guide.

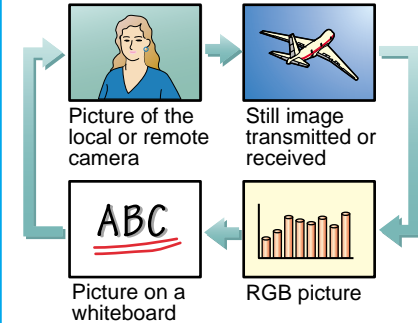
**If communication cannot be established after a number of trials**  
The line registered in the Phone Book may not be used. Consult your system administrator.

# Remote Control Guide: Operations available during communication

For details on operations, refer to the Operating Instructions.

## Switching the picture on the TV monitor

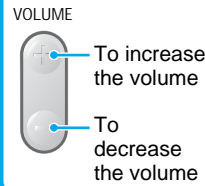
Each press of DISPLAY switches the picture.



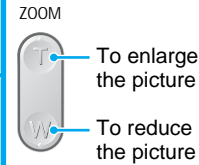
**Note:** You can switch among the available pictures only.

## Switching on/off the local microphone

### Adjusting the sound of the remote party

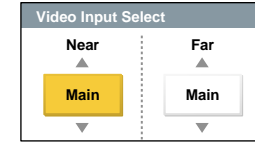


## Adjusting the camera zoom



## Selecting the input picture

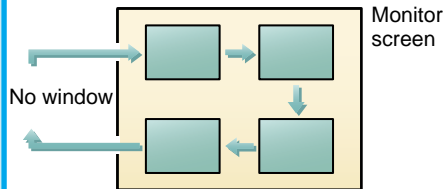
Select the "Near" (local) picture and the "Far" (remote) picture.



- Main:** Picture shot by the main camera
- Object:** Picture from the PCS-DS150/DS150P Document Stand
- AUX 1:** Picture from the equipment connected to VIDEO IN AUX 1
- AUX 2:** Picture from the equipment connected to VIDEO IN AUX 2
- VCR:** Picture input to VCR IN of the remote system

## Changing the location of the window picture

Each press of PinP changes the location of the window.

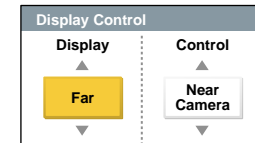


## Displaying the menu available during communication

## Ending the conference

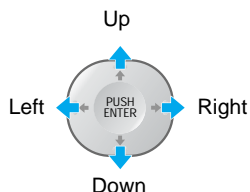


## Selecting the displayed picture and the camera



- Display:** Select the "Near" or "Far" picture to be displayed on the monitor screen.
- Control:** Select the "Near Camera" or "Far Camera" to be controlled.

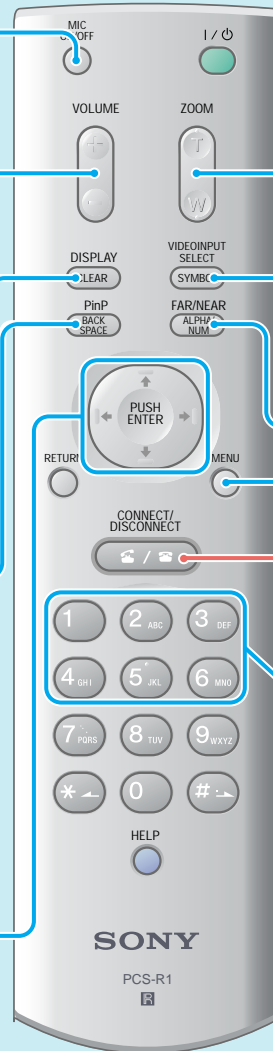
## Adjusting the camera angle



## Using convenient functions



The submenu opens to enable sending of still image, etc.



## Presetting the camera angle

Press button 1 to 6 quickly to move the camera to the preset position. Hold down button 1 to 6 to preset the current camera position.

**Note:** If you press button 1 to 6 quickly when there is no preset setting, the camera moves to the center position.