

# Video Annotation Function Quick Operation Guide for PCS-XG55/XG80

**Start Annotation (on FAR video)**

**Stop Annotation**

**Take Control**

**All Clear**

**Change Color**

**Change Thickness**

**Eraser**

**Wacom Bamboo Pen & Touch CTH-460 \***

**Toggle Annotation Mode between Drawing and Pointing (Press "3" while pressing "1".)**  
Take control prior to using this toggle

**< Start Annotation (on FAR video)**

**> Stop Annotation**

**FN1 : Take Control**

**FN2 : All Clear**

**Change Color**

**Change Thickness**

**Eraser**

**Wacom Bamboo MTE-450**

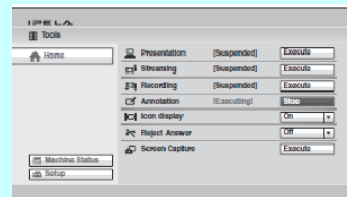
**Toggle Annotation Mode between Drawing and Pointing \* (Press "FN1" while pressing "<".)**  
Take control prior to using this toggle

## To start annotation on NEAR video or PC image instead of on FAR video

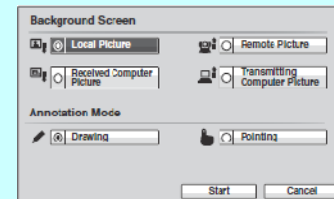


TOOLS button

Press TOOLS button on Remote Commander



Select "Execute" for "Annotation"



Select "Background Screen" and "Annotation Mode" And then select "Start"



Annotation can be started on the selected picture

# Handy Functions Using CTH-460\* (Touch Input)

The touch input feature of CTH-460 allows you to enjoy the annotation function with your fingers in addition to a pen.

## Notes

- Pen and Touch inputs cannot be used at the same time.
- Touch input is disengaged whenever the pen is within the tablet active area.
- The pen input area is slightly larger than the touch sensor area.

Functions	Touch input	Precautions
Drawing/Pointing	Touch the tablet surface <b>with the ball of a finger</b> and slide	When the writing pressure is too small, drawing function does not work properly
Eraser	Touch the tablet surface <b>with the balls of two fingers</b> and slide	During Eraser mode, even if you lift one of the two fingers away from the tablet active area, it does not return to Drawing/Pointing mode
Change Color	Touch the tablet surface with a finger , then <b>tap with a second finger to the right of that finger</b>	
Change Thickness	Touch the tablet surface with a finger , then <b>tap with a second finger (or thumb) to the left of that finger</b>	

Toggle Touch Input  
between Enabled and Disabled  
(Press "2" while pressing "1".)

Take control prior to using this toggle

