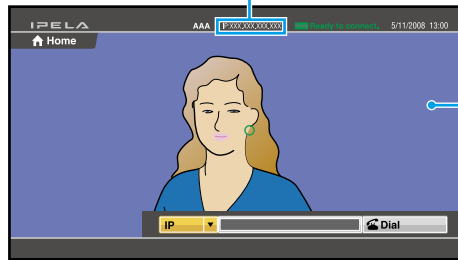


Quick Connection Guide Using Direct Dial

For details on operations, refer to the Operating Instructions (stored in the supplied CD-ROM).

To begin with

Turn on your HD Visual Communication System and TV monitor, and check the following to ensure that connection is possible.



- ② Is the IP address of the local system* or the ISDN line number displayed?
- ① Is the picture of your camera (local picture) on the monitor screen?

Note: Connection to a remote party is not possible if neither the IP address * nor ISDN line number is not displayed.

* You can hide the IP address of the local system using the setup menu.

Main indicators that appear during communication

	FAR	Controlling a remote camera
	NEAR	Local microphone is turned off.
		Presentation (transmission) is being executed.
		Presentation (reception) is being executed.
	NEAR	Local party has a drawing right of annotation.

After checking...

Let's connect



↑/↓/←/→ (arrow) buttons and ENTER button

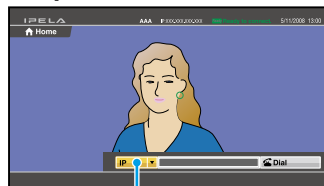
CONNECT button

BACK SPACE button

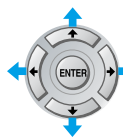
Buttons used for number input

DOT button

1 Select the Line I/F and press ENTER.*



Line I/F



Select the Line I/F to use.



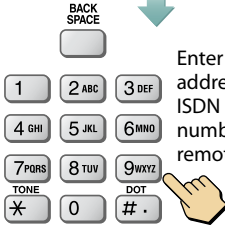
Press.

* The Line I/F cannot be selected depending on the system setup.

2 Select the number text box and press ENTER.



Number text box



Enter the IP address or ISDN line number of a remote party.

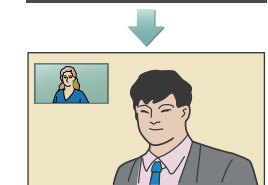
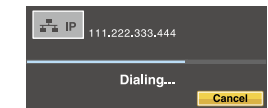
3 Select "Dial" and press ENTER.



Dial

Or, press .

The system establishes communication.



Remote Commander Guide: Operations available during communication

For details on operations, refer to the Operating Instructions (stored in the supplied CD-ROM).

Selecting the input picture

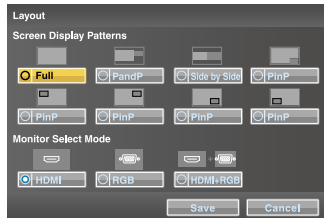
Press the VIDEO INPUT button to display the Video Input menu.
Select the video input using $\uparrow/\downarrow/\leftarrow/\rightarrow$ and ENTER buttons.



- CAMERA:** Video input from the camera connected to CAMERA connector
- S VIDEO:** Video input from the camera or equipment connected to S VIDEO IN connector
- RGB:** Video input from the equipment connected to RGB IN connector
- YPbPr:** Video input from the equipment connected to VIDEO IN YPbPr jacks

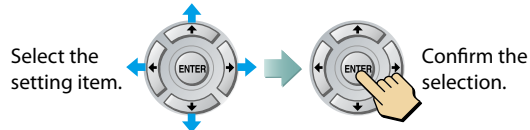
Switching the picture on the TV monitor

Press the LAYOUT button to display the Layout menu.
Select the screen display pattern of the local and remote pictures using $\uparrow/\downarrow/\leftarrow/\rightarrow$ and ENTER buttons.



Operating the menu

Select the setting item in the menu displayed on the screen, and confirm the selection.



Transmitting a picture for presentation

You can transmit a picture from the computer connected to the RGB IN connector to a remote party.



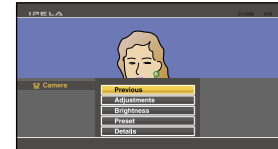
Adjusting the sound volume of the remote party

VOLUME
 \uparrow To increase the volume
 \downarrow To decrease the volume

Switching the local camera and remote camera to be controlled

Displaying Camera menu

Press the CAMERA button to display the Camera menu.

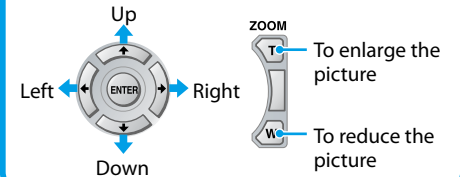


Select the menu item using $\uparrow/\downarrow/\leftarrow/\rightarrow$ and ENTER buttons, and the selected adjustment menu is displayed.

- Adjustments:** for angle and zoom adjustments
- Brightness:** for brightness adjustment
- Preset:** for presetting and recalling the camera angle and zoom
- Details:** for focus adjustment, white balance adjustment and backlight compensation, digital zoom, Bright Face and noise reduction filter functions

Adjusting the camera angle and zoom

To move the camera angle



Ending the communication and disconnecting



Switching on/off the local microphone

SONY
PCS-RF1

Recalling the Preset Camera Angle

Select "Preset" in the Camera menu to display the Preset Setting List. Press button 1 to 6 to move the camera to the preset position.

Displaying Tools menu

Press the TOOLS button to display the Tools menu.
Select the menu item using $\uparrow/\downarrow/\leftarrow/\rightarrow$ and ENTER buttons, and you can use the selected function such as "Annotation."

