



Logitech® ConferenceCam CC3000e

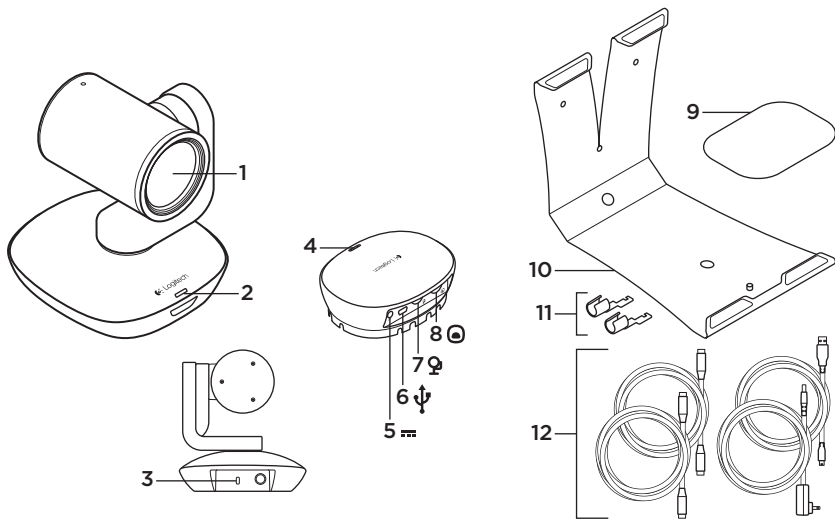
Setup Guide

Guide d'installation



English	3	Español	17
Français	10	Português	24
www.logitech.com/support 			31

Know your product

**Camera**

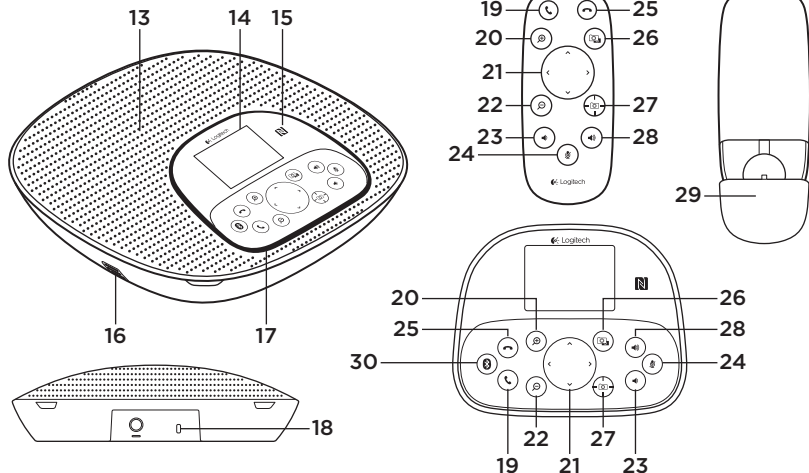
1. 10X lossless zoom
2. Camera LED
3. Kensington® Security Slot

Hub

4. Hub LED
5. Power
6. USB
7. Camera
8. Speakerphone

9. Hub velcro mount

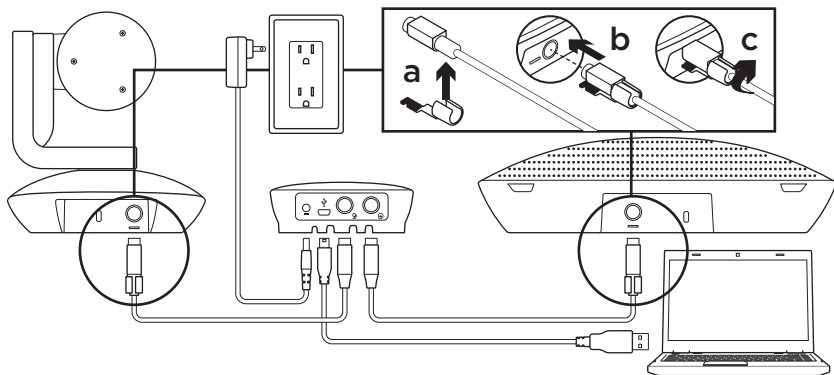
10. Camera mount
11. Cable locks
12. Cables



Speakerphone base and remote

- | | | |
|----------------------------------|------------------|-------------------------|
| 13. Speaker | 19. Answer | 25. Hang up |
| 14. LCD | 20. Zoom in | 26. Far end control |
| 15. NFC | 21. Pan and tilt | 27. Camera presets |
| 16. Microphones | 22. Zoom out | 28. Volume up |
| 17. Speakerphone LEDs | 23. Volume down | 29. Remote battery door |
| 18. Kensington®
Security Slot | 24. Mute | 30. Bluetooth® |

Set up your product



1. Set up camera on table, or using mount on table or wall.
2. Connect cable to speakerphone and camera (refer to diagram above).
 - a. Attach Cable Lock to cable.
 - b. Plug Cable Lock into the slot of the housing.
 - c. Rotate the Cable Lock clockwise to lock the cable.
3. Connect to external power. The LCD will turn on and display the Logitech logo when receiving power.
4. To start a call from your PC or Mac application, connect the USB cable from the hub to your USB port. The speakerphone LCD will also prompt you to connect. The camera and speakerphone LEDs will flash to show that connection is taking place, and when completed, the camera head will rotate and the speakerphone will play a sound. If these activities do not take place, try again and then consult Troubleshooting or call technical support.

5. Start your video or audio call from your application. The LEDs on the camera and speakerphone will alight when streaming, and the LCD will display call information depending on your application's support.
6. To connect CC3000e speakerphone to your mobile device:



- If your device is NFC enabled, touch the mobile device to the NFC icon on the speakerphone, which should enable *Bluetooth* acceptance on the mobile device OR
 - Hold down the *Bluetooth* button until the blue LED on the speakerphone starts blinking rapidly. On your mobile device, go to settings and turn on *Bluetooth*.
- When the CC3000e is paired and connected, the icon will appear bright and when paired but not connected, it will be greyed out.
 - Note: The CC3000e cannot pair to *Bluetooth* while streaming to USB. If an attempt is made to pair to a mobile device while in a USB call, an error beep will sound. Please wait till the USB call is complete before pairing your mobile device.

Visit Product Central

Discover your product's full potential. Get valuable information and usage tips by browsing easy-to-use FAQs. Find answers to product questions and get help setting up your product. See if there's software available for download that can enhance your product experience. To enjoy all the benefits of your Logitech product, visit www.logitech.com/support/cc3000e and take advantage of Logitech's wide range of useful support services:

- Product information
- Tutorials
- User "How to" One-Pager
- Troubleshooting
- Diagnostics
- Firmware upgrades
- Support community
- Software downloads
- In-box documentation
- Warranty information
- Spare parts (if available)

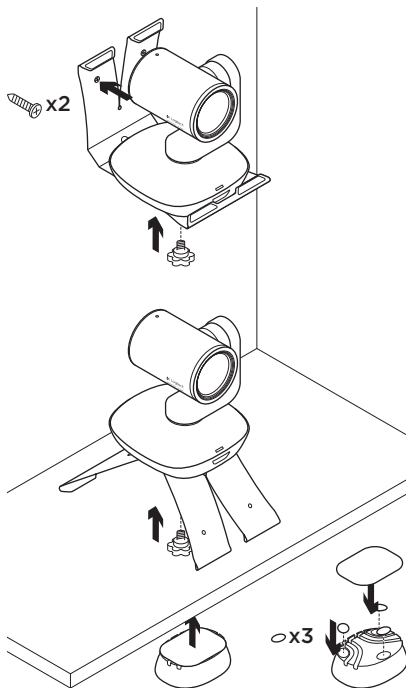
Use your product

Video

- **Starting the video:** The video is controlled by the application and will start once the camera is selected and the video is started in the application. An LED will light when the video is streaming.
- **Pan and tilt** the camera using the controls on the remote control or on the speakerphone console. Press once for incremental or press and hold for continuous pan or tilt. Caution: Do not manually rotate webcam head. Doing so may damage unit.
- **Zoom** the camera up to 10X by pressing the zoom button.
- **Camera Preset:** If you wish the camera to return to your own defined "home" position when reconnected to the PC, first select the position and then press and hold the Camera Preset button until the associated icon displays on the LCD and a beep plays to confirm the setting. You may also return to your defined home position at any time by pressing the Camera Preset button once.

- **Far end control:** By selecting this key and downloading the application from www.logitech.com/support/cc3000e, you may control the pan, tilt and zoom of a remote ConferenceCam CC3000e or a ConferenceCam BCC950 in supported applications. Camera selection and pan, tilt and zoom tools are also available from the downloadable application for PC as well as ability to disable this feature locally. Please visit the download page listed for more information.
- **Volume:** Volume Up and Down adjusts volume.
- **Mute:** Mute audio with Mute button.
- **Calling:** Run video conferencing software. Answer picks up call. Hang up ends call.
Note: Answer and Hang up buttons may not work in some applications. Use video conferencing software to answer and end call. To enable answer and hangup buttons for Skype or Cisco Jabber, please download the respective plug-ins available from www.logitech.com/support/cc3000e.
- **Speakerphone Activity light indications**
Blue: ConferenceCam is in active call.
Blinking blue: Call is being received.
Blinking blue light in call: Call has been put on hold (from hold function in application) Speakerphone blue activity light may not work in some applications.
Red: Audio is muted.
- **LCD Activity:** The LCD will display call activity as well as volume and connectivity status.
- **Bluetooth:** To connect CC3000e speakerphone to your mobile device for speakerphone broadcast of call:
 - If your device is NFC enabled, touch the mobile device to the NFC icon on the speakerphone, which should enable *Bluetooth* acceptance on the mobile device OR
 - Hold down the *Bluetooth* button until the blue LED on the speakerphone starts blinking rapidly. On your mobile device, go to settings and turn on *Bluetooth*.
 - When the CC3000e is paired and connected, the icon will appear bright and when paired but not connected, it will be greyed out.

Mounting your camera and hub



Changing the remote control battery

The CC3000e remote control runs on a Li-ion CR2032 battery. Battery life will vary based on usage.

Troubleshooting tips

Please visit www.logitech.com/support/cc3000e for troubleshooting tips, information on software tools and for a diagnostic tool to help troubleshoot issues you may have with your CC3000e.

What do you think?

Please take a minute to tell us. Thank you for purchasing our product.

www.logitech.com/ithink

www.logitech.com/support/cc3000e



Argentina	+0800-555-3284
Brasil	+0 800-891-4173
Canada	1-877-897-9879
Chile	1230 020 5484
Colombia	01-800-913-6668
Mexico	01.800.800.4500
United States	1-877-897-9879



www.logitech.com

© 2014 Logitech. All rights reserved. Logitech, the Logitech logo, and other Logitech marks are owned by Logitech and may be registered. Microsoft, Windows Vista, Windows, and the Windows logo are trademarks of the Microsoft group of companies. *Bluetooth* is a registered trademark of Bluetooth SIG, Inc. All other trademarks are the property of their respective owners. Logitech assumes no responsibility for any errors that may appear in this manual. Information contained herein is subject to change without notice.

© 2014 Logitech. Tous droits réservés. Logitech, le logo Logitech et les autres marques Logitech sont la propriété exclusive de Logitech et sont susceptibles d'être déposés. Microsoft, Windows Vista, Windows et le logo Windows sont des marques déposées du groupe et des sociétés Microsoft. *Bluetooth* est une marque déposée de Bluetooth SIG, Inc. Toutes les autres marques commerciales sont la propriété de leurs détenteurs respectifs. Logitech décline toute responsabilité en cas d'erreurs susceptibles de s'être glissées dans le présent manuel. Les informations énoncées dans ce document peuvent faire l'objet de modifications sans avis préalable.

620-005278.005